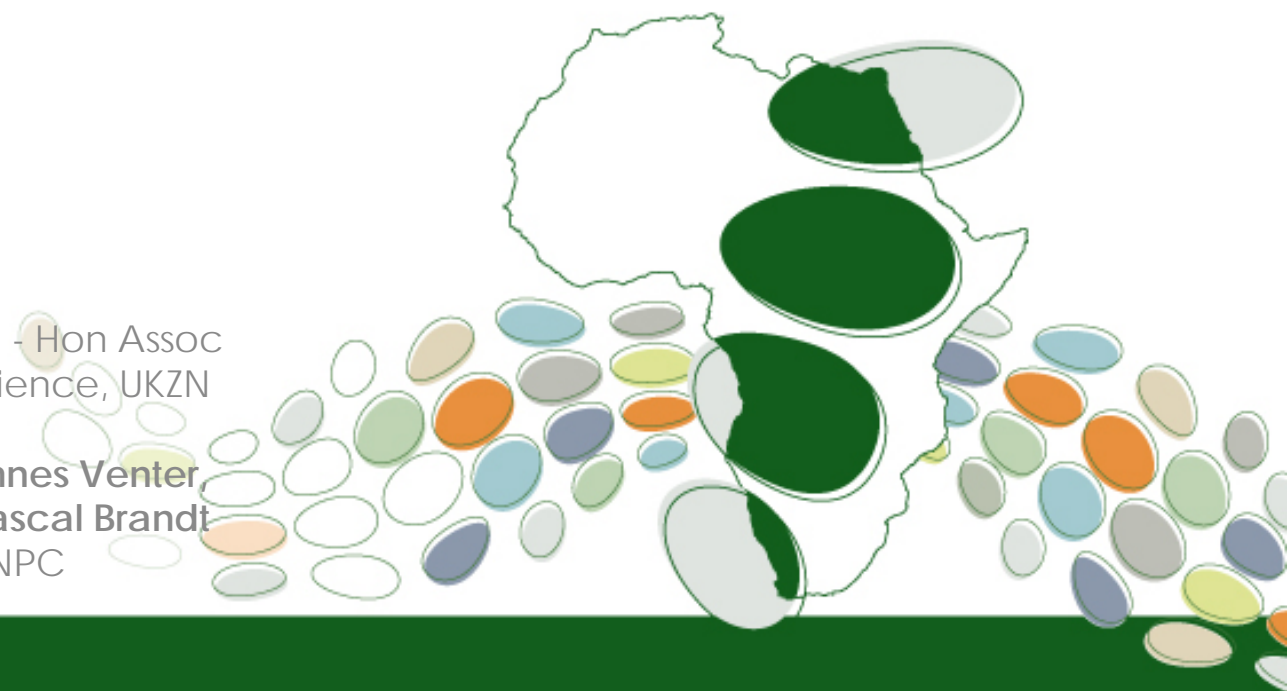


# Introduction to OpenHIE and interoperability for national health information systems

**Chris Seebregts**

CEO Jembi Health Systems NPC - Hon Assoc  
Prof, Discipline of Computer Science, UKZN

**Carl Fourie, Ryan Crichton, Hannes Venter,  
Pierre Dane, Wayne Naidoo, Pascal Brandt**  
Jembi Health Systems NPC



 **jembi health systems** NPC

[www.jembi.org](http://www.jembi.org)

# Overview

- OpenHIE
- OpenHIM
- Implementations and Experiences



# The Challenge

Clinicians need accurate, timely and complete information for decision-making

but

healthcare information solutions are often siloed making it difficult to share information across different systems, different facilities and different locations



# Who is OpenHIE

- OpenHIE is a diverse mission-driven community of practice including countries, organizations, individuals and donors working to promote sharing of health data across many different software products.
- We make and improve standards-based software to improve the exchange of health information.

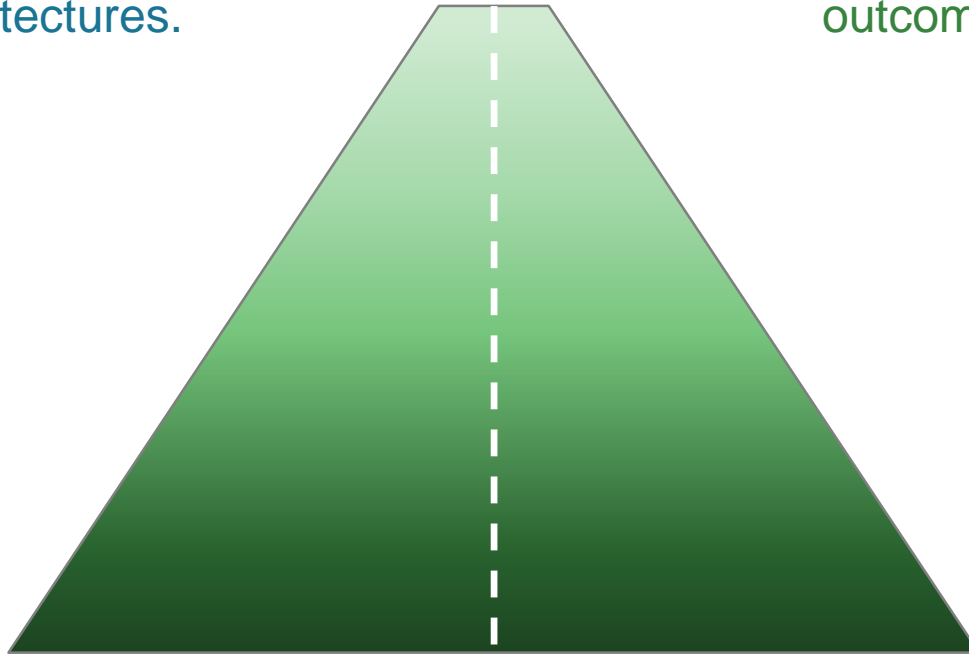


# MISSION

Our mission is to improve the health of the under-served through the open collaborative development and support of country driven, large scale health information sharing architectures.

# VISION

We envision a world where all countries are empowered to pragmatically implement sustainable health information sharing architectures that measurably improve health outcomes.





# How OpenHIE started

## PARTNERS

- OpenHIE initiative begins in partnership with ***Health Informatics Public Private Partnership (HIPPP)***.

## FUNDING

- U.S. President's Emergency Plan for AIDS Relief (PEPFAR)

## OUR WORK

- To support the development of ***Rwanda Health Enterprise Architecture (RHEA)*** project.
- HIPPP & RHEA project partnered up to support and deliver a health information exchange in Rwanda.



# Community of Communities



*Health Information  
Exchange*



*Interoperability  
Layer*



*Point of Service  
Applications*



## Architecture Framework

Sharing Data to Improve Health Outcomes





# Client Registry



An enterprise master patient index (EMPI), or ***Client Registry*** manages the unique identity of citizens receiving health services with the country – “For whom”



# Health Worker Registry



A ***Health Worker Registry*** is the central authority for maintaining the unique identities of health providers within the country – “By whom”



# Facility Registry



A ***Health Facility Registry*** serves as a central authority to uniquely identify all places where health services are administered within the country –  
“Where?”



# Terminology Service



A ***Terminology Service*** serves as a central authority to uniquely identify the clinical activities that occur within the care delivery process by maintaining a terminology set mapped to international standards such as ICD10, LOINC, SNOMED, and others –  
“What?”



# Shared Health Record



A ***Shared Health Record*** is a repository containing the normalized version of content created within the community, after being validated against each of the previous registries. It is a collection of person-centric records for patients with information in the exchange.



# Health Interoperability Layer



*Interoperability Layer*

A ***Health Interoperability Layer*** receives all communications from point of service applications within a health geography, and orchestrates message processing among the point of service application and the hosted infrastructure elements.



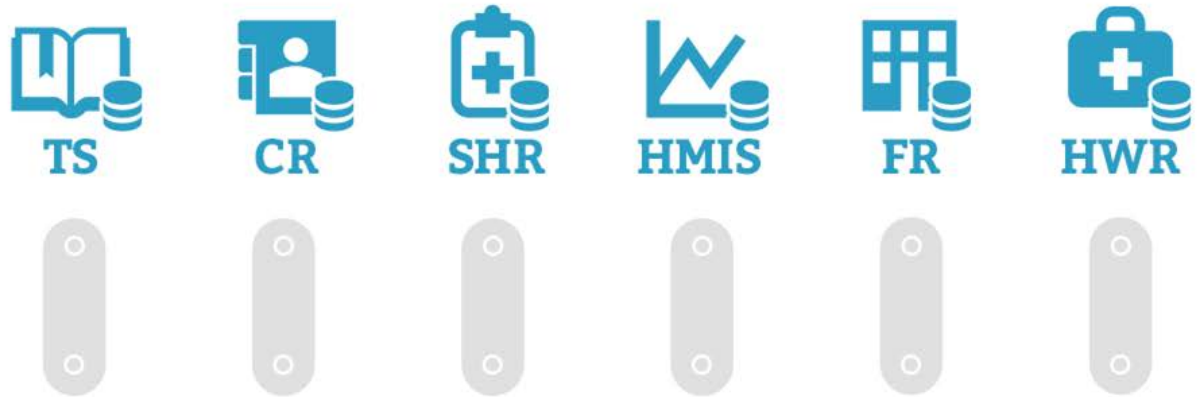
# Health Management Information System



A **Health Management Information System** is a repository containing the normalized version of aggregate-level content created within the community, after being validated against each of the previous registries. It is a collection of indicator-centric records for cohorts with information in the exchange.



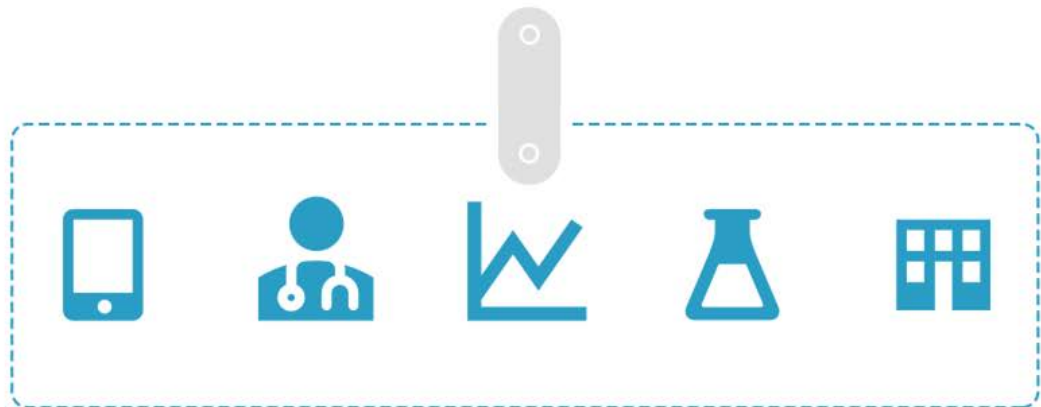
*Health Information  
Exchange*



*Interoperability  
Layer*



*Point of Service  
Applications*



## Architecture Framework

Sharing Data to Improve Health Outcomes



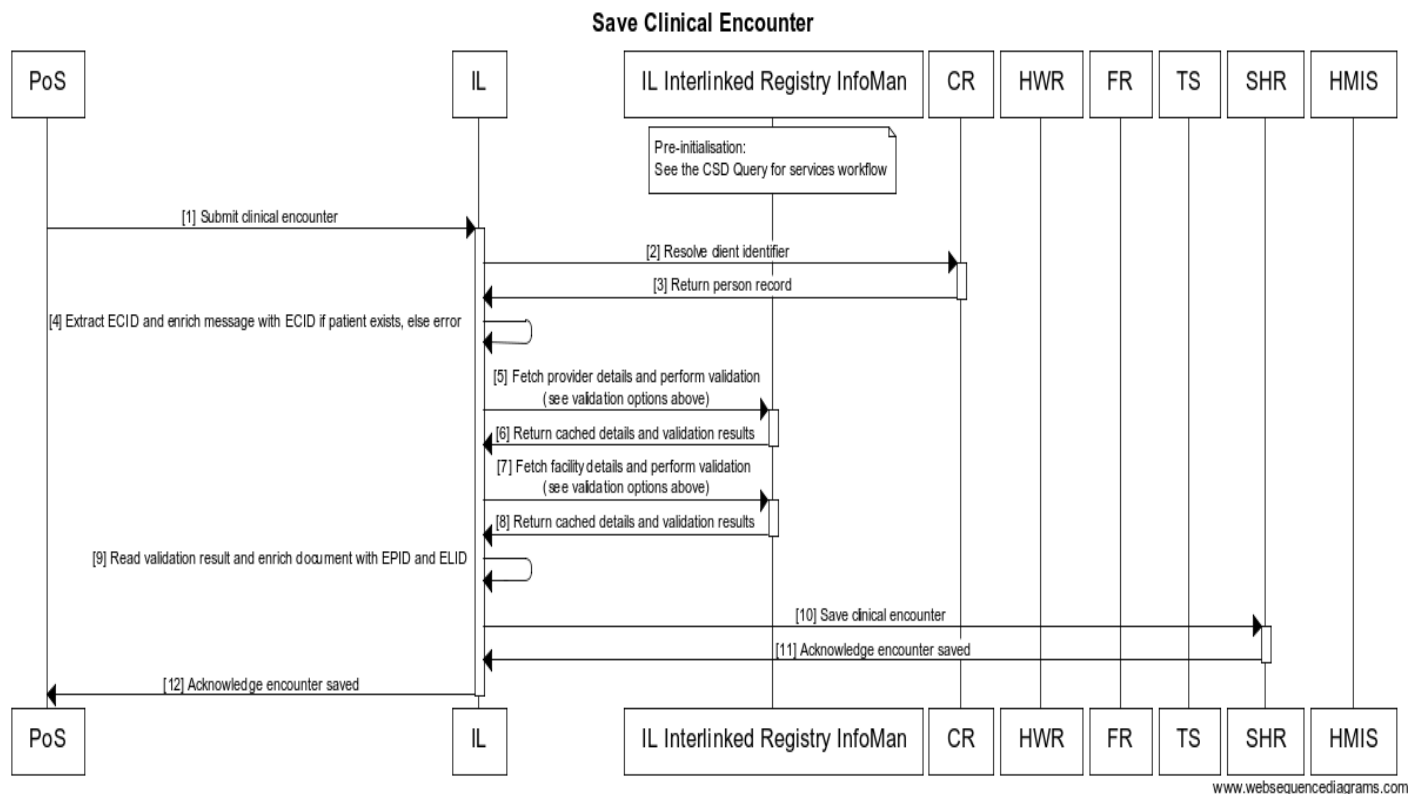


# OpenHIE workflows

- Managing patient demographics
  - Create patient demographic record
  - Update patient demographic record
  - Query patient demographic records by identifier
  - Query patient demographic records by demographics
- Managing clinical data
  - **Save patient-level clinical data**
  - **Query patient-level clinical data**
- Query health worker and/or facility records



# How OpenHIE Workflows work



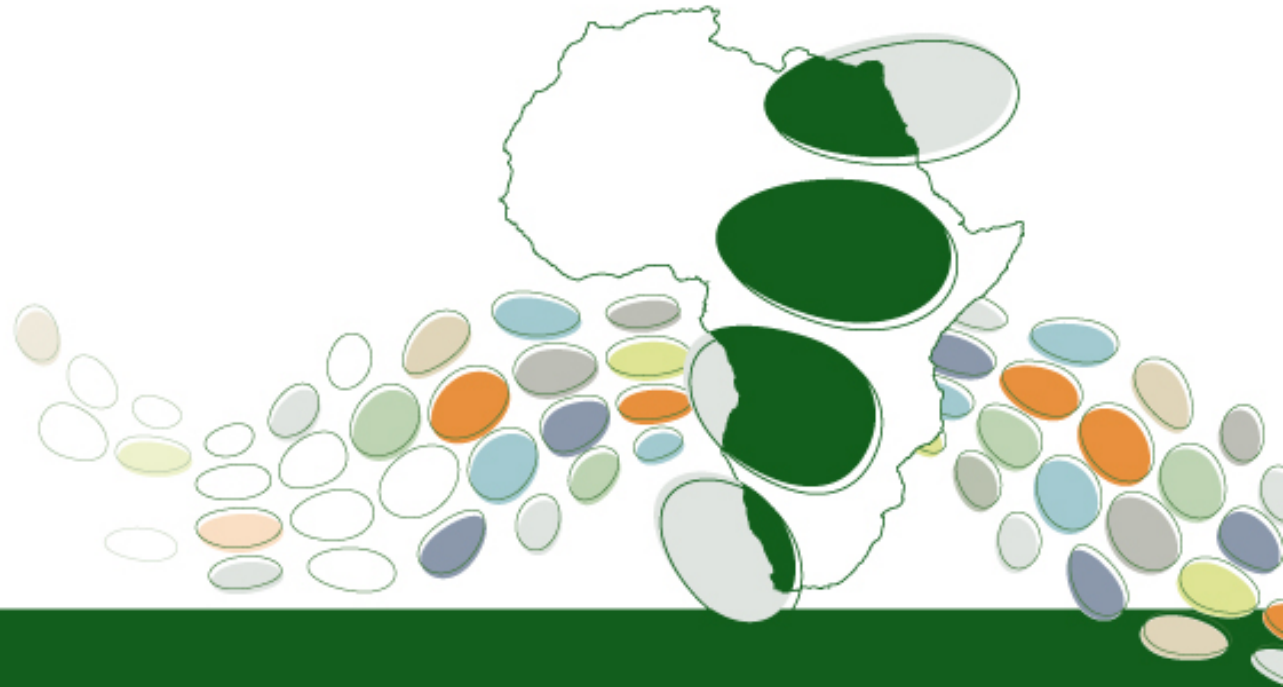
# To Get Involved



ohie.org/getinvolved  
info@openhie.org



# Open Health Information Mediator



 jembi health systems NPC

[www.jembi.org](http://www.jembi.org)

# OpenHIM

Open Health Information Mediator (OpenHIM)

- Middleware tool focuses on the exchange of Health Data
- Developed and maintained by Jembi as open source ([www.openhim.org](http://www.openhim.org))
- Developed to facilitate standards compliant data exchange
- Reference tool of the OpenHIE Interoperability Layer Community (IOL)
- Acts as the *lock* within an HIE



## Here's a problem:

We have 5 systems that all need to talk to each other

**System 1**

**System 4**

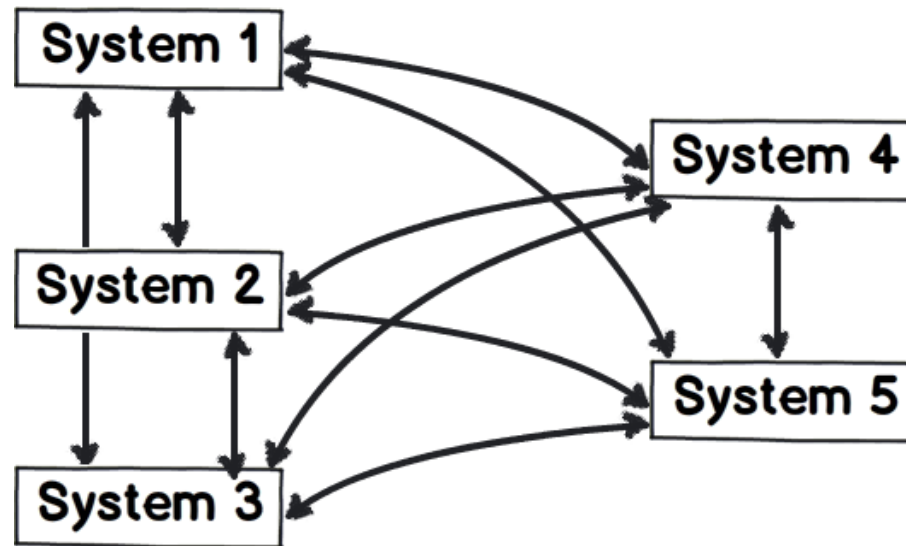
**System 2**

**System 5**

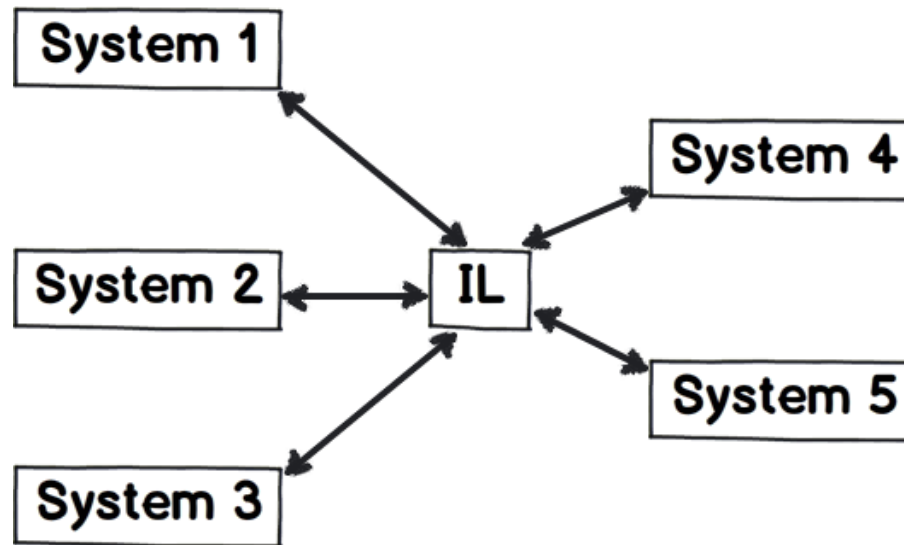
**System 3**



## Solution 1:

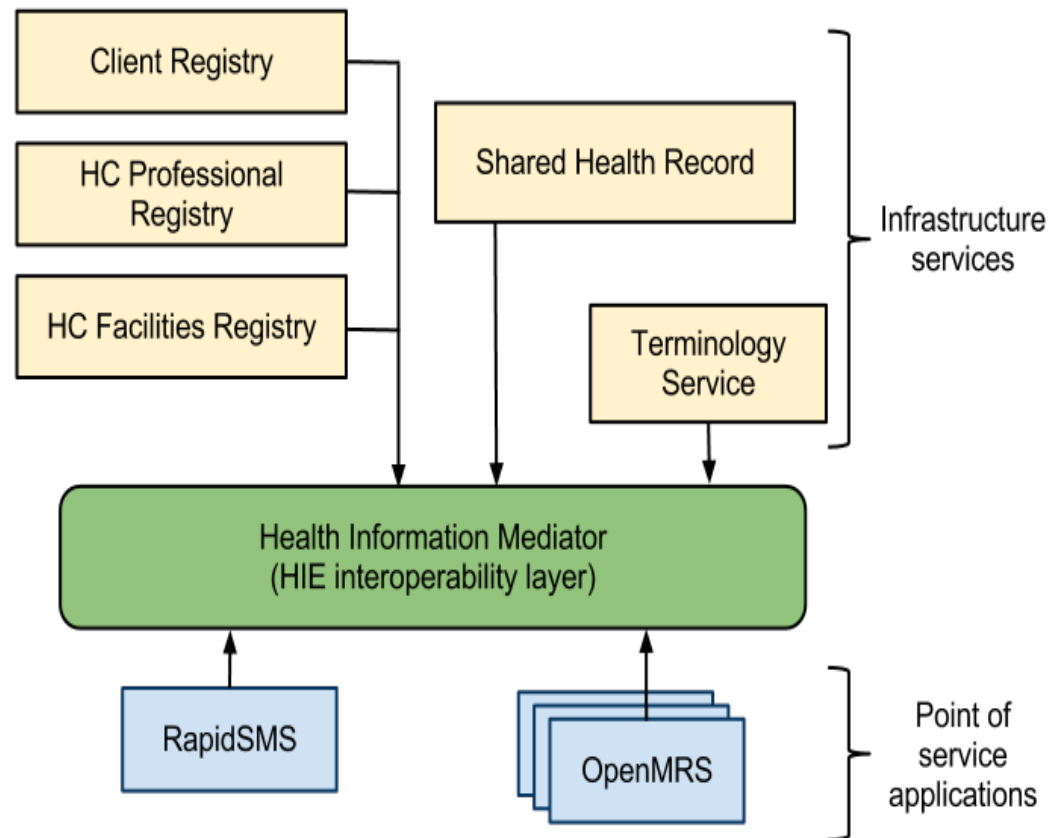


## Solution 2:





# Where does the OpenHIM fit within an HIE?



An example - The Rwandan Health Information Exchange

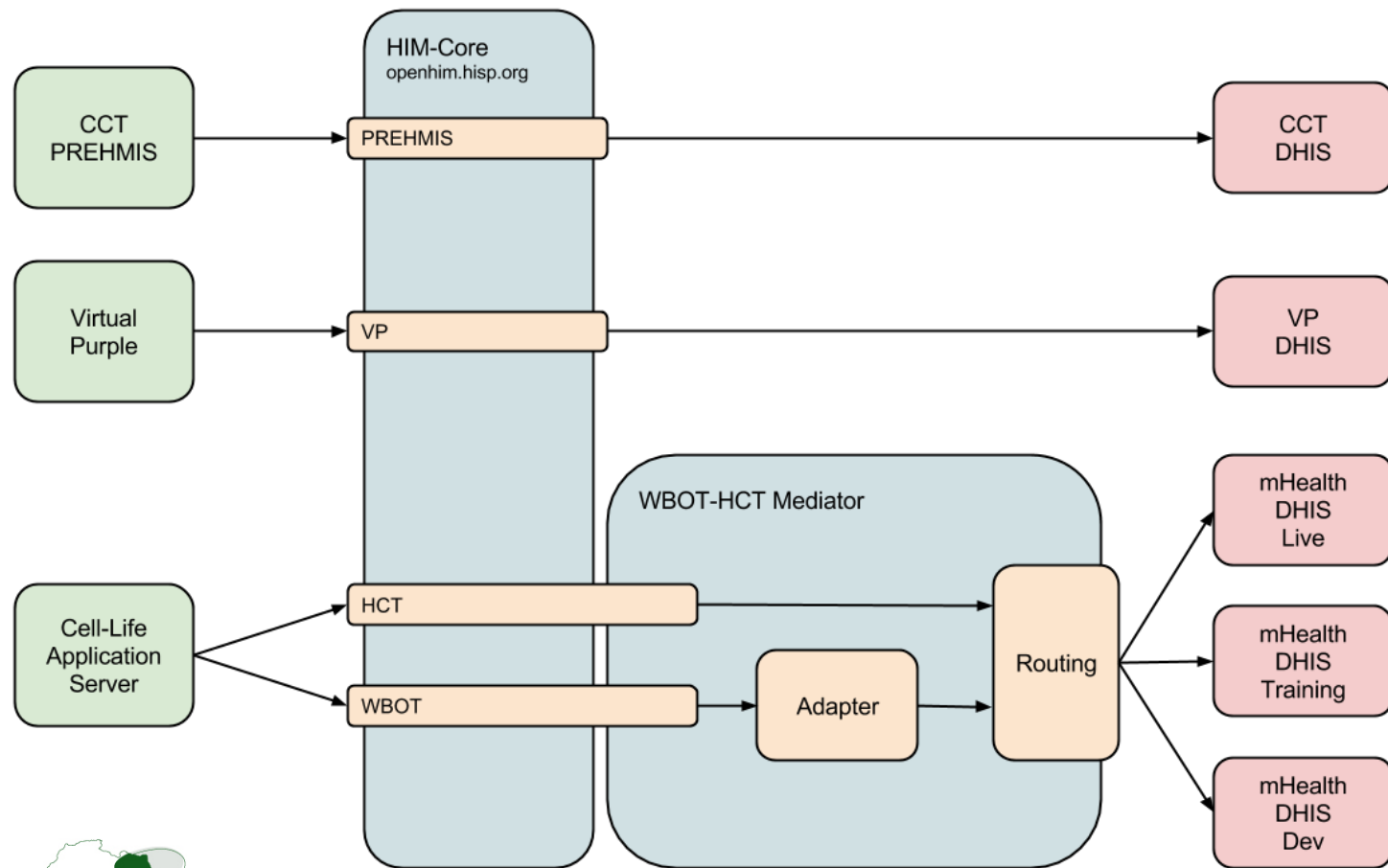


OpenHIE in Action

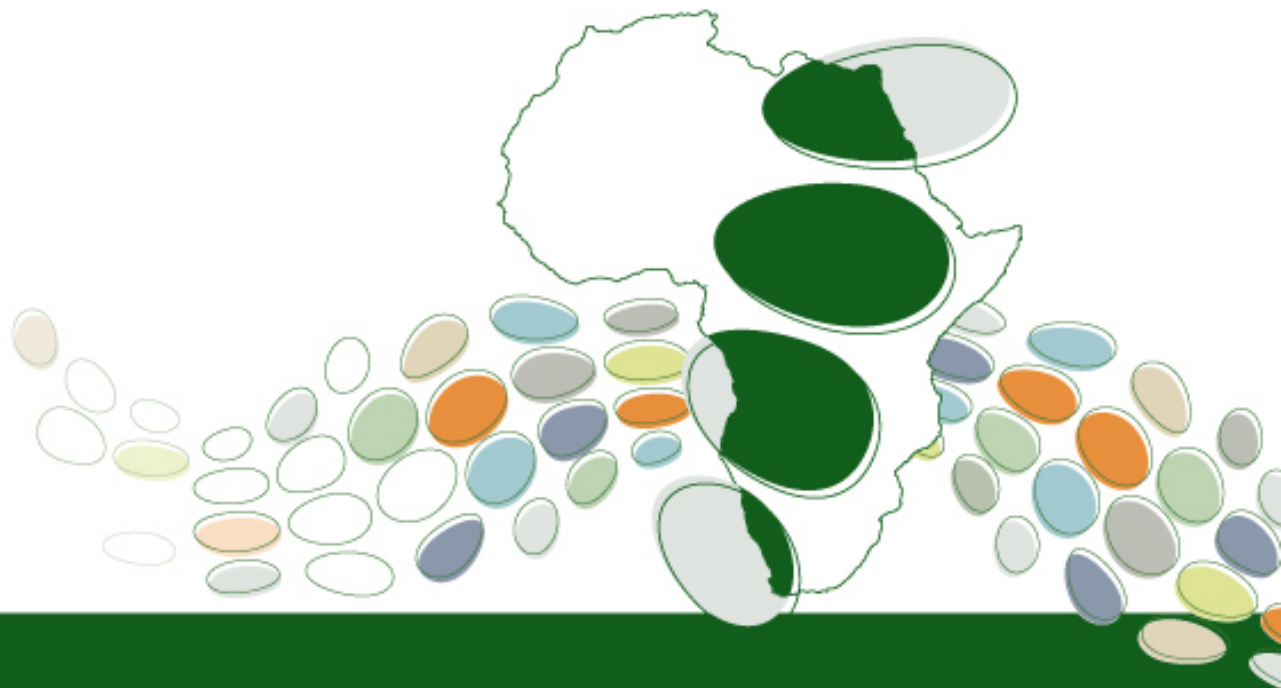
# CURRENT AND PAST PROJECTS



# Current Implementations of the OpenHIM



# MomConnect Project



 jembi health systems NPC

[www.jembi.org](http://www.jembi.org)



# MomConnect

- Project of the South African National Department of Health, under the guidance of the Minister
- Operationalized through the mobile maternal health task team





# HNSF Act

STAATSKOERANT, 23 APRIL 2014

No. 37583 3

## GOVERNMENT NOTICE

### DEPARTMENT OF HEALTH

No. 314

23 April 2014

NATIONAL HEALTH ACT, 2003 (ACT NO. 61 OF 2003)

NOTICE IN TERMS OF THE NATIONAL HEALTH ACT NO 61 OF 2003: NATIONAL  
HEALTH NORMATIVE STANDARDS FRAMEWORK FOR INTEROPERABILITY IN  
EHEALTH



<http://www.health.gov.za/ehealth.php>

 **jembi** health systems NPC



# Development of the HNSF

- Commissioned by the National Department of Health (NDoH)
- Developed by the Meraka Institute of the Council for Scientific and Industrial Research (CSIR) in collaboration with the Nelson Mandela Metropolitan University (NMMU)





# HNSF Some Highlights

- Patient-centric approach including a shared health record
- Maturity levels based on paper and electronic records
- Based on international standards, including base standards, profiles and interoperability specifications (IHE, ISO, HL7 etc)
- Adopt, adapt and develop (in that order) standards
- Interoperability architecture based on Health Information Exchange with demographic and clinical registries
- Requires a unique patient identifier and identification system
- Enterprise Architecture required to extend HNSF for a particular implementation

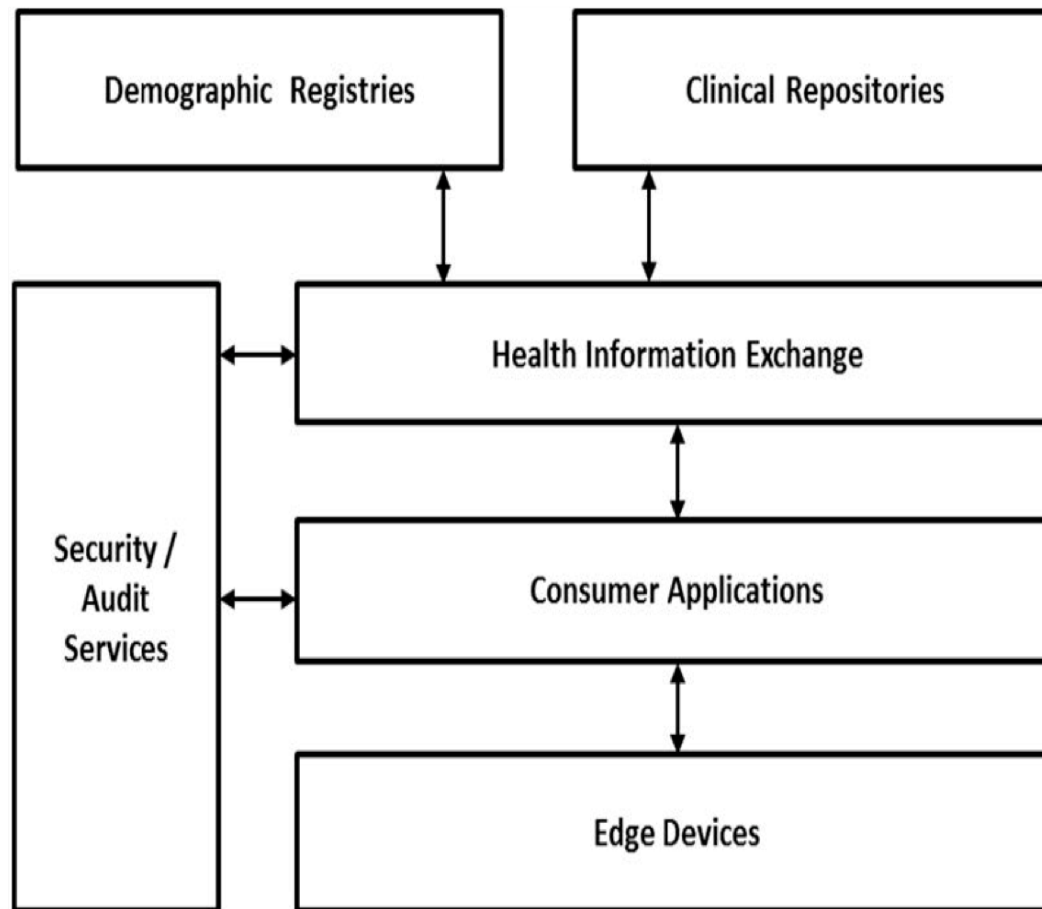






# National Health Normative Standards Framework (HNSF)

## Generic eHealth Architectural Components



Ref: NDOH, CSIR. National Health Normative Standards Framework for Interoperability in eHealth in South Africa. Version 2.0, March 2014

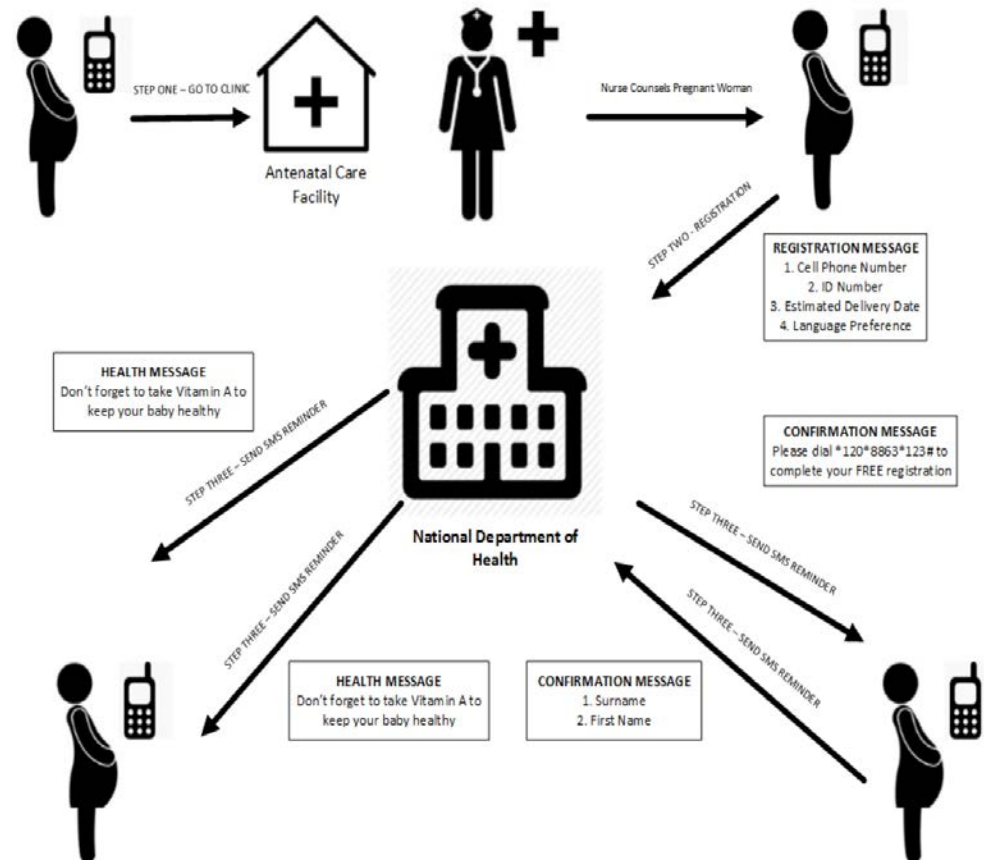




# MomConnect

## Partners:

- NDOH
- Jembi
- Praekelt Foundation
- CSIR
- HISP-SA





# Architectural Design

- Architecture based on the HNSF integrated national shared electronic health record system
- Five layers:
  - Edge Devices, eg mobile phone
  - Consumer Applications, eg mHealth services
  - Health Information Exchange, eg OpenHIM
  - Demographic and Clinical Repositories, eg the National Pregnancy Registry
  - Security / Audit Services, eg certificate service

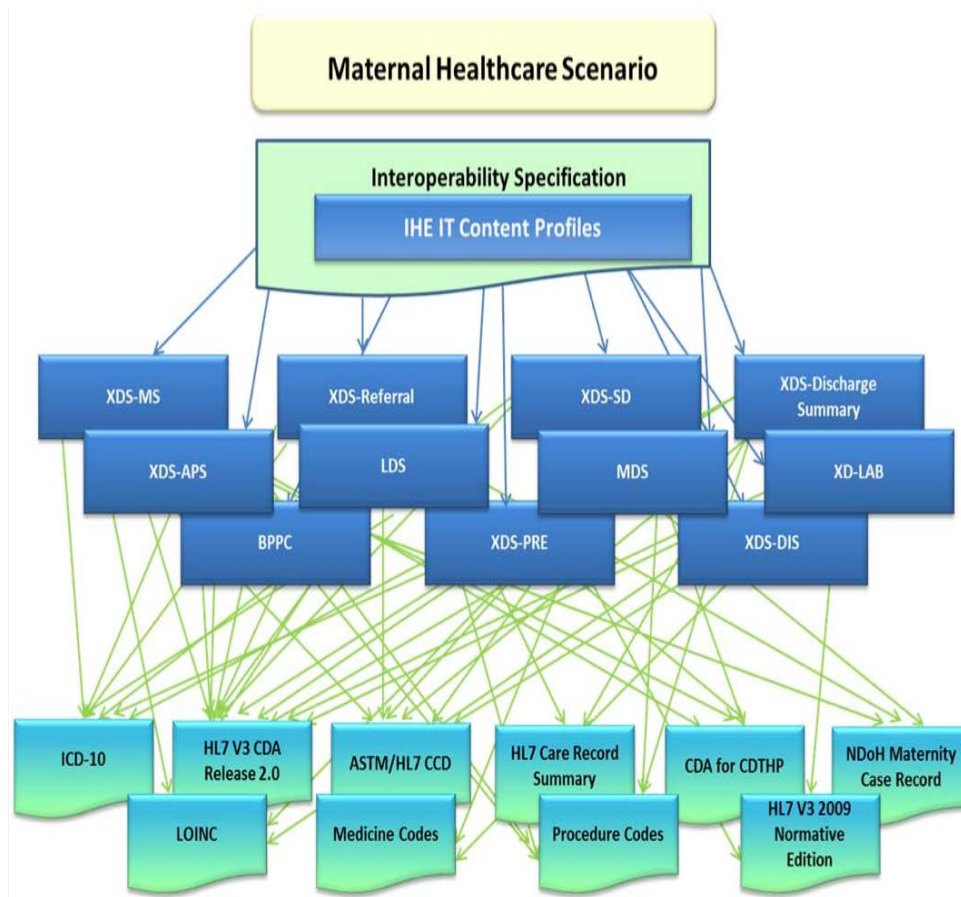


MomConnect Reference Implementation

of HNSF  
**jemb**i health systems NPC



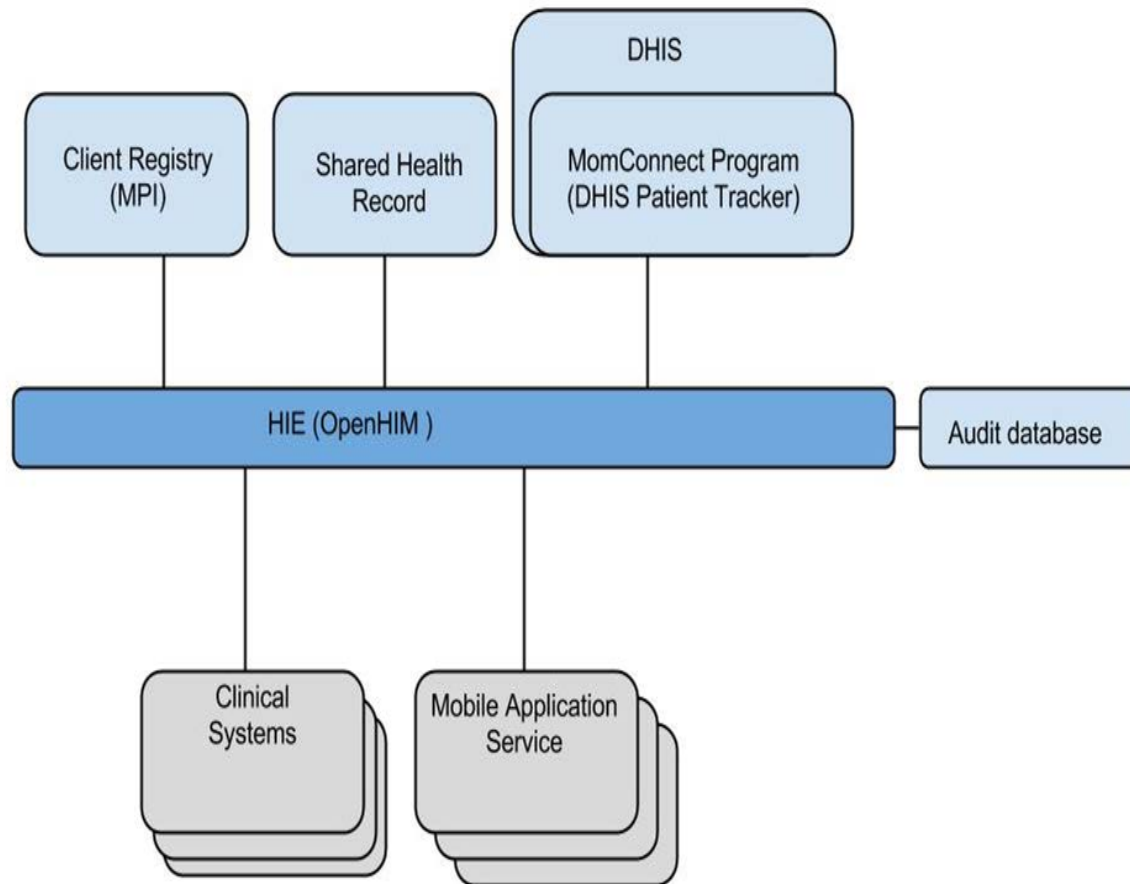
# HNSF Maternal Health Standards and Profiles



Ref: NDOH, CSIR. National Health Normative Standards Framework for Interoperability in eHealth in South Africa. Version 2.0, March 2014



# MomConnect Backend System



# Results



South African Government

www.gov.za

Together we move South Africa forward



HOME ABOUT NEWSROOM SERVICES DOCUMENTS

Home » Newsroom » Speeches

## Minister Aaron Motsoaledi: Health Dept Budget Vote 2015/16

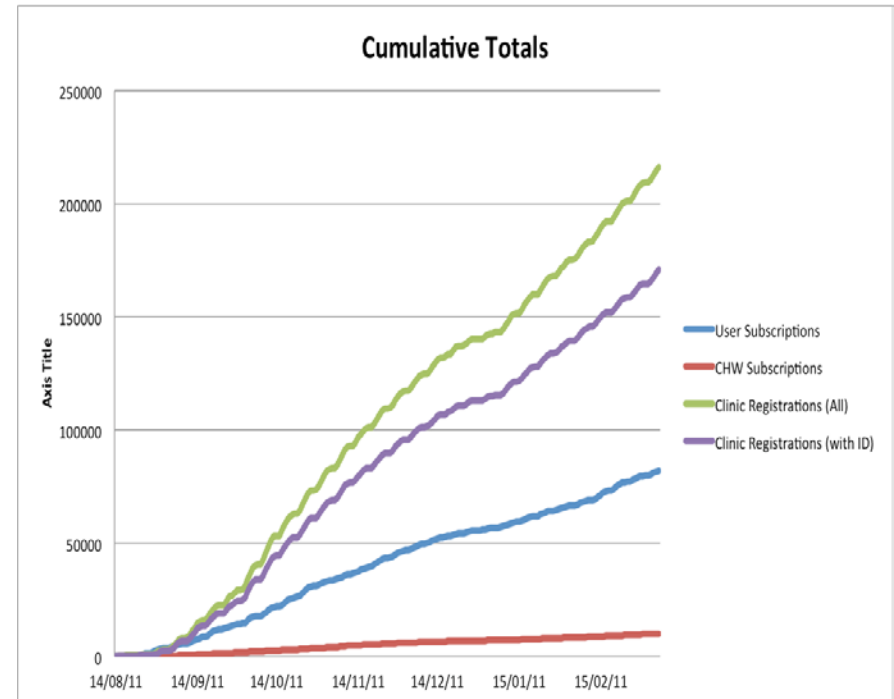
5 May 2015

In August last year, we launched the MomConnect project at Motubatse clinic in Soshanguve, Tshwane Metro.

This project uses cellphone technology to register pregnant women – all pregnant women in both public and private health care. This empowers them to get all the information and instructions necessary for them to ensure a healthy pregnancy and deliver a healthy vibrant baby.

After delivery, the messages switch over to focus on information on the health needs of a new-born and will continue for up to one year after birth.

Honourable Speaker, I am very happy to announce that in a short space of only 8 months we have been able to register 383 354 pregnant women on the system. It is regarded as the largest number in the world. Before we started, Bangladesh was regarded as a world leader after registering 100 000 women in 18 months, while other countries are having only small pilot projects – nothing yet on a massive scale like we have.





# Thank You

## Q&A

**PHYSICAL** Unit D11, Westlake Square,  
Bell Crescent, Westlake, Cape Town

**POSTAL** Postnet Suite 280, Private Bag X26,  
Tokai 7966, South Africa

**TEL** +27 (0)21 701 0939

**FAX** +27 (0)21 701 1979

**EMAIL** [info@jembi.org](mailto:info@jembi.org)

**WEBSITE** [www.jembi.org](http://www.jembi.org)



[www.jembi.org](http://www.jembi.org)



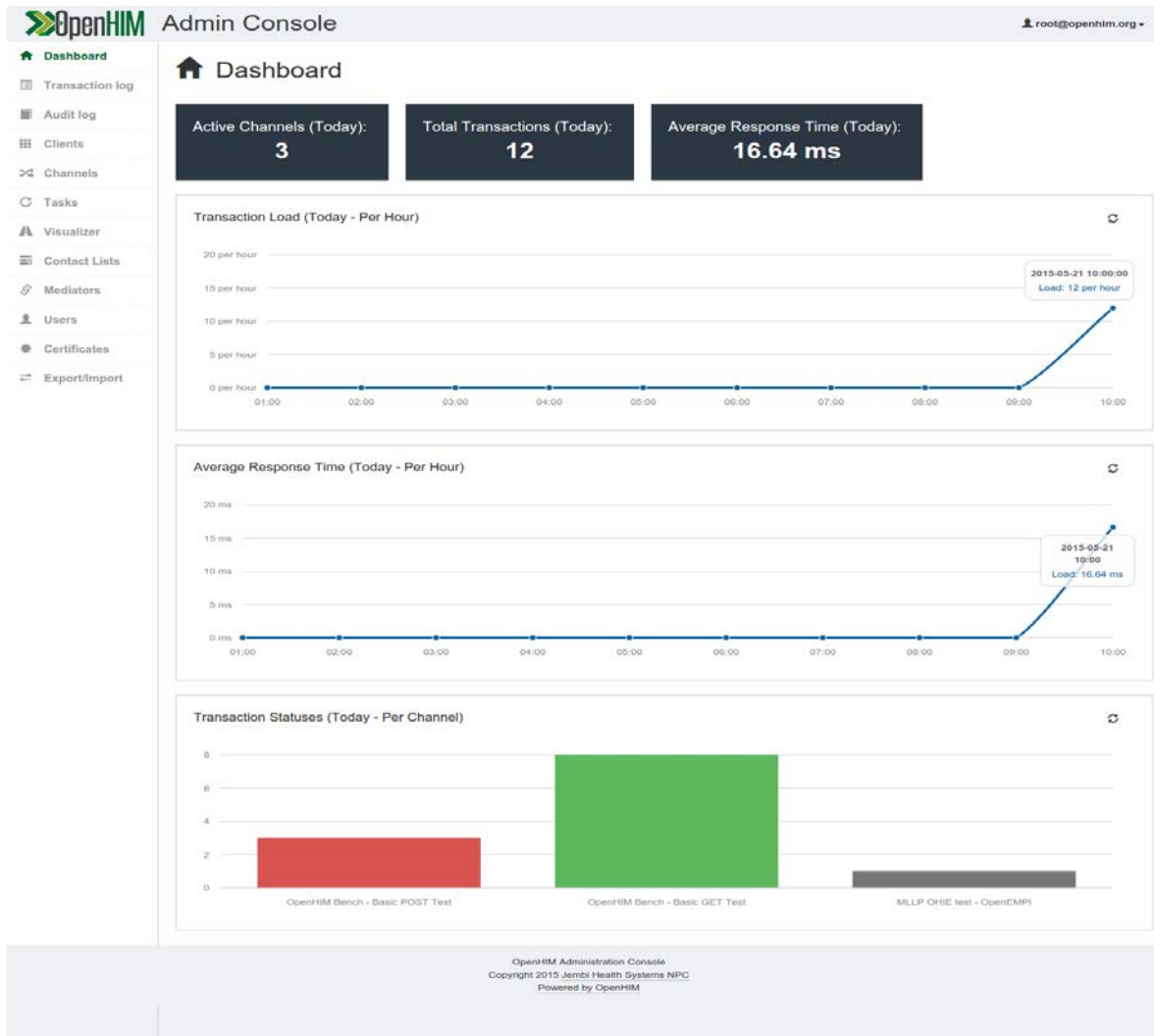
The **OpenHIM** is an **IL** – an **Interoperability Layer**

[www.openhim.org](http://www.openhim.org)





# OpenHIM Dashboard



Key function of the OpenHIM is to give you a view into what is happening within your HIE



# OpenHIM transaction log

OpenHIM

Admin Console

root@openhim.org

Dashboard

Transaction log

Audit log

Clients

Channels

Tasks

Visualizer

Contact Lists

Mediators

Users

Certificates

Export/Import

Transactions Log

Filter Settings

List Settings

Toggle Advanced Filters

Basic Filters:

Status: 1

Channel: 1

Date Range: 1

Don't filter

Don't filter

Re-run Selected Transactions

Re-run all transaction that match current filters

#	HTTP Method	Path	Request Params	Channel
1	GET	/bench/basic/get		OpenHIM Bench - Basic G
2	GET	/bench/basic/get		OpenHIM Bench - Basic G
3	GET	/bench/basic/get		OpenHIM Bench - Basic G
4	GET	/bench/basic/get		OpenHIM Bench - Basic G
5	POST	/bench/basic/post		OpenHIM Bench - Basic P
6	POST	/bench/basic/post		OpenHIM Bench - Basic P
7	POST	/bench/basic/post		OpenHIM Bench - Basic P
8	GET	/bench/basic/get		OpenHIM Bench - Basic G
9	GET	/bench/basic/get		OpenHIM Bench - Basic G
10	GET	/bench/basic/get		OpenHIM Bench - Basic G

Re-run Selected Transactions

OpenHIM Administration Console  
Copyright 2015 Jembi Health Systems NPC  
Powered by OpenHIM

OpenHIM

Admin Console

root@openhim.org

Dashboard

Transaction log

Audit log

Clients

Channels

Tasks

Visualizer

Contact Lists

Mediators

Users

Certificates

Export/Import

Transaction #5555ef0b9b9d892d17e28918

ID: 5555ef0b9b9d892d17e28918

Status: Successful

Channel:

Authorized Client:

Request

Response

Status: 201

Timestamp: 2015-05-15 15:05:17 +0200

Headers: [Show/Hide Headers](#)

Body:

----- Part 48 1127640026.1431695117946  
Content-Type: application/soap+xml; charset=utf-8; type="application/soap+xml"  
  
<env:Envelope  
  xmlns:env="http://www.w3.org/2003/05/soap-envelope">  
  <env:Header  
    xmlns:wsa="http://www.w3.org/2005/08/addressing">  
    <wsaTo env:mustUnderstand="true" http://www.w3.org/2005/08/addressing/anonymous/ wsaTo>  
      xmlns:act="urn:ietf:params:xml:ns:act" http://www.w3.org/2005/08/addressing/anonymous/ wsaAction>  
    <wsa:MessageID>urn:uuid:bac0d85c-be15-4832-b1be-c4b3892c0b8c/ wsa:MessageID>  
    <wsa:RelatesTo>fe76d5ee-ee00-41b3-acc4-582134885c3cc/ wsa:RelatesTo>  
  </env:Header>  
  <env:Body>  
    <ns3:RegistryResponse  
      xmlns:ns3="urn:oasis:names:tc:ebml-regrep:xdr:r3.0">  
      <ns3:ns2>urn:oasis:names:tc:ebml-regrep:xdr:r3.0</ns3:ns2>  
      <ns3:ns4>urn:ietf:params:xml:ns:act</ns3:ns4>  
      <ns3:ns5>urn:oasis:names:tc:ebml-regrep:xdr:r3.0</ns3:ns5>  
    </ns3:RegistryResponse>  
  </env:Body>  
</env:Envelope>  
  
Orchestrations:  

Name	Method	Path	Request Params	Status	Response Time
MHD to XDS.b mediator request	POST	/xdsrepository		200	2015-05-15 15:05:17 +0200
Parse Provider and Register Document Set.b contents					2015-05-15 15:05:15 +0200
PDX Resolve Enterprise Identifier					2015-05-15 15:05:15 +0200
PDX Resolve Enterprise Identifier					2015-05-15 15:05:15 +0200
PDX Create Patient Demographic Record					2015-05-15 15:05:15 +0200
PDX Resolve Enterprise Identifier					2015-05-15 15:05:15 +0200
PDX Resolve Enterprise Identifier					2015-05-15 15:05:15 +0200
XDS.b Repository	POST	/openmrs/ms/xdsrepository		200	2015-05-15 15:05:17 +0200

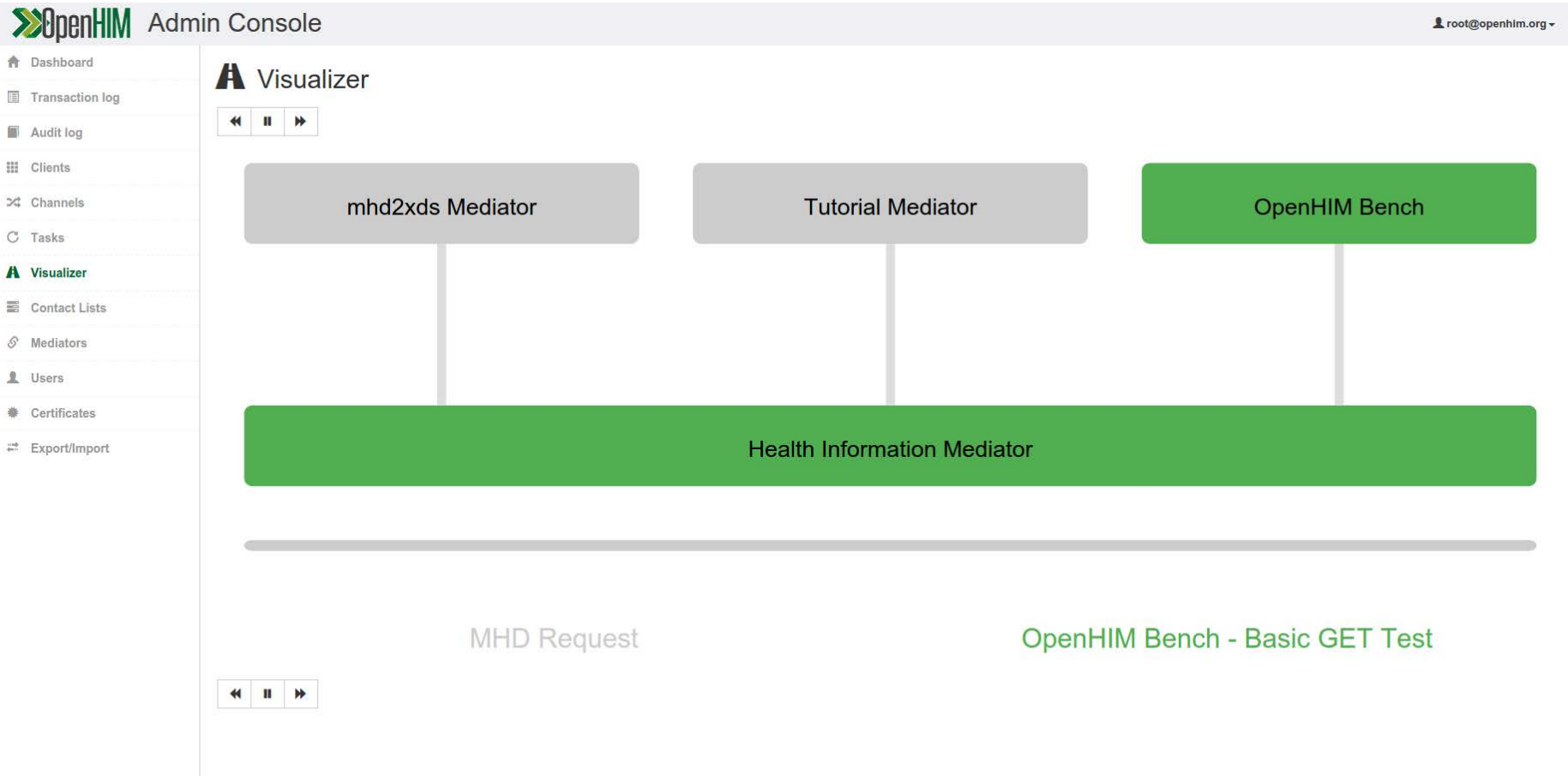
View Full Response Body

OpenHIM Administration Console  
Copyright 2015 Jembi Health Systems NPC  
Powered by OpenHIM

View technical details  
about the transaction  
(messages) flowing  
through your HIE



# Visualizing transactions





# Thank You

## Q&A

**PHYSICAL** Unit D11, Westlake Square,  
Bell Crescent, Westlake, Cape Town

**POSTAL** Postnet Suite 280, Private Bag X26,  
Tokai 7966, South Africa

**TEL** +27 (0)21 701 0939

**FAX** +27 (0)21 701 1979

**EMAIL** [info@jembi.org](mailto:info@jembi.org)

**WEBSITE** [www.jembi.org](http://www.jembi.org)



[www.jembi.org](http://www.jembi.org)